



Color: -K [Black], -W [White]



460,000-dot

DMC-LX5 Specifications

CCD	Camera Effective Pixels	10.1 megapixels	Shutter Speed	Still: 60 - 1/4000 sec (Starry Sky mode: 15, 30, 60 sec) Movie: 1/30 - 1/20000 sec (Creative Movie mode: 1/8 - 1/20000 sec)		
	Sensor Size / Total Pixels / Filter	1/1.63" / 11.3 total megapixels / Primary Color Filter	Exposure	Program AE, Aperture Priority AE, Shutter Priority AE, Manual		
Lens	Aperture	F2.0 - 3.3 / Multistage Iris Diaphragm (F2.0 - 8.0 [W] / F3.3 - 8.0 [T]) (F2.0 - 11.0 [W] / F3.3 - 18.0 [T] in movie recording)	Exposure Compensation	1/3 EV step, -3 - +3 EV		
	Optical Zoom / Focal Length	3.8x / f=5.1 - 19.2 mm [35 mm equiv.: 24 - 90 mm] [35 mm equiv.: 25 - 95 mm in movie recording]	Backlight Compensation	Yes (in Intelligent AUTO mode)		
	Extra Optical Zoom (Max.)	6.7x (3M or below)	Auto [AE] Bracketing	+/- 1/3 EV - 3 EV step, 3 frames		
	Intelligent Zoom (Max.)	5x	Light Metering	Intelligent Multiple / Center Weighted / Spot		
Optical Image Stabilizer	LEICA DC VARIO-SUMMICRON	10 elements in 9 groups (3 aspherical lenses)	ISO Sensitivity	Auto / i.ISO / 80 / 100 / 200 / 400 / 800 / 1600 / 3200 / 6400* / 12800* (*By Pixel Mixed Readout) (High Sensitivity mode: 1600 - 12800)		
	POWER O.I.S. (Auto / Mode1 / Mode2)		White Balance	Auto / Daylight / Cloudy / Shade / Flash / Halogen / Color Temperature / White Set1 / White Set2 2-axis adjustable in +/- 9 steps		
Digital Zoom	4x (Max. 26.8x combined with Extra Optical Zoom)		Face Recognition	Yes		
Focus	Focusing Area	Normal: 50 cm (1.64 ft) [W] / 50 cm (1.64 ft) [T] - ∞ Macro / Intelligent AUTO: 1 cm (0.03 ft) [W] / 30 cm (0.98 ft) [T] - ∞	Color Mode / Color Effect	Film mode: Standard / Dynamic / Nature / Smooth / Vibrant / Nostalgic / Standard B&W / Dynamic B&W / Smooth B&W / My Film 1 / My Film 2 / Multi Film, My Color mode: Expressive / Retro / Pure / Elegant / Monochrome / High Dynamic / Dynamic Art / Dynamic B&W / Silhouette / Pinhole / Film Grain / Custom, Intelligent AUTO mode: Happy		
	AF Assist Lamp	Yes		Picture Adjustment	Contrast / Sharpness / Saturation / Noise Reduction	
	Focus	Normal / Macro, Quick AF (On / Off), Continuous AF (On / Off), AF/MF switchable, Manual Focus (Jog Dial and Cursor Button), One Shot AF, AF area select, AF Tracking	Self Timer	2 sec / 10 sec		
	AF Mode	Face / AF Tracking / Multi [23-area] / 1-area (Flexible / Scalable)	Playback Mode	Normal Playback, 30-thumbnail display, 12-thumbnail display, Calendar display, Zoomed playback (16x Max.), Playback of favorite pictures, Category Playback, Mode Playback, Slideshow (duration & effect with music are selectable), Resizing (selectable number of pixels), Cropping, Leveling, Protection, DPOF print setting, Playback of motion pictures (AVCHD Lite / Motion JPEG)		
Recording File Format	Still Image	JPEG [DCF / Exif2.3], RAW, DPOF compatible	LCD Monitor	3.0" TFT LCD (460K dots), Approx. 100% coverage, AR coating, High CRI (Color Rendering Index) LED backlight		
	Still Image with Audio	JPEG [DCF / Exif2.3] + QuickTime	Viewfinder	Optional: External Viewfinder / Live View Finder		
File Size (Pixels)	Still Image	4:3	10M (3648 x 2736) / 7M (3072 x 2304) / 5M (2560 x 1920) / 3M (2048 x 1536) / 2M (1600 x 1200) / 0.3M (640 x 480)	Flash	Built-in-Flash	Auto, Auto/Red-eye Reduction, Forced On, Slow Sync./Red-eye Reduction, Forced Off, Flash Synchro: 1st / 2nd; Flash Output Adjustment (1/3 EV step, -2 - +2 EV)
		3:2	9.5M (3776 x 2520) / 6.5M (3168 x 2112) / 4.5M (2656 x 1768) / 3M (2112 x 1408) / 2.5M (2048 x 1360) / 0.3M (640 x 424)		Flash Range (ISO Auto)	0.8 - 7.2 m (2.63 - 23.62 ft) [W] / 0.3 - 4.4 m (0.98 - 14.44 ft) [T]
		16:9	9M (3968 x 2232) / 6M (3328 x 1872) / 4.5M (2784 x 1568) / 2.5M (2208 x 1248) / 2M (1920 x 1080) / 0.2M (640 x 360)	Digital Red Eye Correction (Red-Eye Removal)	Yes	
	Motion Image	4:3	OVGA (320 x 240) at 30 fps / VGA (640 x 480) at 30 fps (Motion JPEG)	Recording Media	Built-in Memory, SD Memory Card, SDHC Memory Card, SDXC Memory Card	
		16:9	WVGA (848 x 480) at 30 fps (Motion JPEG)	Built-in-Memory	Approx. 40 MB	
		HD	1280 x 720, NTSC: 60p (CCD output is 30p) / PAL: 50p (CCD output is 25p) [AVCHD Lite, SH: 17 Mbps / H:13 Mbps / L:9 Mbps] / 30 fps (Motion JPEG)	Microphone / Speaker	Mono (Dolby® Digital Creator) / Yes	
Image Quality	Fine / Standard / RAW+Fine / RAW+Standard / RAW	Interface	AV Output (NTSC / PAL), mini HDMI, USB2.0 High Speed			
Rec. Mode	Recording Mode	Intelligent AUTO, P, A, S, M, Creative Movie, My Color, SCN, Custom 1, Custom 2	HDMI Output	Video: Auto / 1080i / 720p / 480p (576p in PAL areas) Audio: Dolby® Digital Creator		
	Movie Button	Yes	Direct Print	PictBridge		
	Still Image SCN Mode	Portrait, Soft Skin, Self-Portrait, Scenery, Panorama Assist, Sports, Night Portrait, Night Scenery, High Sensitivity, Food, Party, Candle Light, Baby1, Baby2, Pet, Sunset, Hi-Speed Burst (Image Priority / Speed Priority), Flash Burst, Starry Sky, Fireworks, Beach, Snow, Aerial photo	Battery	ID-Security Li-ion Battery Pack (3.6 V, Minimum: 1250 mAh), AC Adapter (optional)		
	Movie SCN Mode	Portrait, Soft Skin, Self-Portrait, Scenery, Low Light, Food, Party, Candle Light, Sunset, Beach, Snow, Aerial, High Sensitivity (Activated by selecting Still Image SCN mode then pressing movie button. Still Image SCN modes without corresponding Movie SCN mode is recorded in Normal mode)	Battery Life (CIPA*)	Approx. 400 images		
Continuous Shooting	Full-Resolution Image	2.5 fps; Max. 5 [Standard] / 3 [Fine] images	Included Software	PHOTOfunSTUDIO 5.0 HD Edition, SILKYPIX® Developer Studio 3.1 SE, QuickTime™, Adobe® Reader®		
	Hi-Speed Burst Mode (Max.)	Approx. 10 fps (3M for 4:3 / 2.5M for 3:2 / 2M for 16:9)	Standard Accessories	Battery Charger, Battery Pack, AV Cable, USB Cable, AC Cable, Shoulder Strap, CD-ROM, Lens Ring Front, Hot Shoe Cover, Lens Cap, Lens Cap String		
Dimensions (W x H x D)	Approx. 109.7 x 65.5 x 43.0 mm / excl. protrusions: 25.5 mm (4.32 x 2.58 x 1.69 in / excl. protrusions: 1.00 in)	Weight	Approx. 271 g with Battery and SD Memory Card (0.61 lb) / Approx. 233 g without Battery and SD Memory Card (0.51 lb)			

*Based on the CIPA standard. Shooting conditions: 23°C with 50% humidity; LCD on; using SD Memory Card; starting to shoot 30 seconds after turning on the power; shooting once every 30 seconds with the flash in full operation for every other shot; changing the zoom setting from telephoto to wide, or wide to telephoto, for each shot; and temporarily turning the power off after each 10 shots (long enough to lower the battery temperature). The number of recordable pictures decreases in Auto Power LCD mode or Power LCD mode. •PHOTOfunSTUDIO 5.0HD: Requires Microsoft® Windows® XP, Windows Vista® or Windows® 7. •SILKYPIX® Developer Studio 3.1SE: Requires Microsoft® Windows® 2000/XP or Vista® (Only a systems administrator with authority can install software on a Windows® XP or 2000), or Apple® Mac OS® X v10.2 or later (Version 10.3 or later is recommended). AVCHD is a high-definition (HD) digital video recording / playback format jointly established by Panasonic Corporation and Sony Corporation. AVCHD Lite is a subset of the AVCHD format for HD digital video cameras with HD video recording restricted to 720p. AVCHD Lite logo and the AVCHD Lite license are restricted to devices within the AVCHD Video Camera category. Digital cameras have been added to the AVCHD Video Camera category. For more details, please refer to the "AVCHD Information Website". <http://www.avchd-info.org> •Leica is a registered trademark of Leica Microsystems IR GmbH. •The LEICA DC VARIO-SUMMICRON lens is manufactured using measurement instruments and quality assurance systems that have been certified by Leica Camera AG based on the company's quality standards. •Dolby and the double-D symbol are trademarks of Dolby Laboratories. •HDMI, the HDMI logo and High-Definition Multimedia Interface are trademarks or registered trademarks of HDMI Licensing LLC. •Microsoft® and Windows® are either registered trademarks or trademarks of Microsoft Corporation in the United States and/or other countries. •Apple® and Mac OS® are either registered trademarks or trademarks of Apple, Inc. in the United States and/or other countries. •QuickTime and the QuickTime logo are trademarks or registered trademarks of Apple, Inc., used under license therefrom. •Other names of systems and products mentioned in this brochure are generally the registered trademarks or trademarks of the manufacturers who developed the system or product concerned. •Weight and dimensions shown are approximate. •Design, functions, and specifications are subject to change without notice. •Some sample images are simulated. •Some accessories are not available in some countries. •The use of recorded or printed materials that are protected by copyright for any purpose other than personal enjoyment is prohibited, as it would infringe upon the rights of the copyright holder.

Panasonic

ideas for life

LUMIX



LOCAL DEALER

Panasonic

<http://panasonic.net/lumix>

Official Worldwide Olympic Partner

Panasonic



LX5



The Sunset Meister

There's nothing quite as beautiful as the sun setting over the ocean.

And there's never been a compact camera for capturing nature's beauty like the LUMIX LX5.

The LX5 beautifully reproduces the finely nuanced hues and shading that make up nature's palette.

Behind this remarkable performance is a pair of remarkable technologies.

The F2.0 LEICA DC VARIO SUMMICRON lens boasts the superb rendering that has long been a Leica hallmark, and Panasonic's new high-sensitivity CCD and LSI provide a wider dynamic range and exceptional image processing.

Together, these technologies capture images with levels of beauty, clarity and depth that stir the emotions.

The LX5. A compact camera worthy of the most magnificent moments.

Exposure: 24mm*, Manual, 3.2 sec, F8.0, ISO100
*35mm camera equivalent.



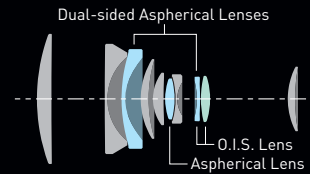
LX5

The bright LEICA DC VARIO-SUMMICRON lens captures even the atmosphere around your subject



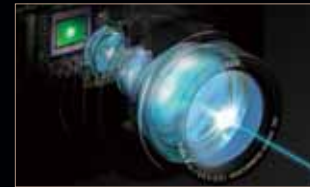
Remarkable F2.0 brightness at full aperture

Highlighting the LX5 is the LEICA DC VARIO-SUMMICRON lens. Comprising 10 lens elements in 9 groups, including 3 aspherical lenses, this sophisticated lens system takes you all the way from 24mm to 90mm range (35mm camera equivalent). By drastically suppressing the spherical and chromatic aberration and decreased peripheral light that commonly occur at the wide-angle setting, this lens achieves a dramatic 30% (approx.) improvement in resolution compared to previous lenses. Resolution is superb across the entire image. F2.0 brightness with the aperture fully open (at the wide-angle setting) lets you use a fast shutter speed even in dim lighting, and lends striking emphasis to portraits by giving the background a soft, delicate focus. Together with a 24mm ultra-wide-angle lens – rare on a compact camera – this gives you a wider range of composition possibilities.



POWER O.I.S. (Optical Image Stabilizer) prevents even slight hand-shake blur

Technology to fight blurring caused by hand-shake has evolved in the optical design of the LX5. The LX5's POWER O.I.S. system has twice* the corrective power of conventional models. This advanced function expands your expressive possibilities, providing superior blur-prevention even at low shutter speeds, such as when shooting at night with the camera handheld.



*Panasonic comparison

The jog dial lets you make settings quickly and easily

A jog dial on the camera back lets you freely adjust the exposure and focus when the LX5 is in manual mode. You can select functions and make settings quickly and easily, leaving you free to concentrate on the shot.



Rubber grip provides a steady handhold

A rubber grip with a leather-like appearance makes this compact, lightweight camera easy to hold and use. Every time you pick up the LX5, you experience the pleasure of handling a fine tool that reflects the highest levels of quality and craftsmanship.



Outstanding Ease of Operation

– A Camera that Does Exactly What You Want It to Do

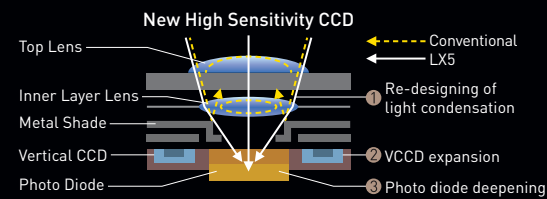


Exquisite Image Rendering with Outstanding Gradation



10.1-megapixel CCD delivers superior image quality and sensitivity

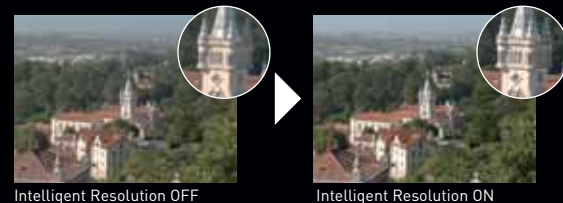
The LX5 introduces a redesigned internal structure that employs an on-chip lens to boost light-collecting efficiency and improve the photoreceptivity of the photodiode. This led to a 1/1.63" CCD with greater sensitivity and a wider dynamic range. As a result, the LX5 captures razor-sharp, finely gradated images with minimal noise, unprecedented detail and extremely subtle color shading.



The Venus Engine FHD delivers both high image quality and a super-fast response



The Venus Engine FHD incorporates three CPUs. This not only boosts image processing speed, it also helps achieve an exceptional noise-reduction performance. Also, the three CPUs of the Venus Engine FHD allow long-time movie recording in AVCHD Lite while maintaining low power consumption. And the Venus Engine FHD features a new circuit that enables Intelligent Resolution Technology to help boost image quality as well.



Select the aspect ratio that suits your artistic purpose

Taking advantage of its large CCD, the LX5 lets you switch the aspect ratio of the photo without changing the focal distance.* Simply use the switch on the top of the lens to select from standard 4:3, film camera 3:2, 16:9 for viewing on an HDTV, and the unique 1:1 composition, depending on your artistic purpose or intent.

*Except for the 1:1 aspect ratio. The angle of view changes when shooting movies



A bright, easy-to-see, 460,000-dot, 3.0-inch LCD

The LX5 comes equipped with a high-resolution, 460,000-dot, 3.0-inch Intelligent LCD that features an AR coating for easy viewing under direct sunlight and a High CRI (Color Rendering Index) LED backlight to increase the color reproduction offering remarkable visibility in any conditions from at dark night to under dazzling sunlight.



Switch instantly between Auto Focus and Manual Focus

A switch on the side of the lens lets you switch between AF, AF Macro, and MF. You can switch instantly without taking your eyes from the subject on the LCD screen or activating the menu screen.



A hot shoe for mounting the Live View Finder

The LX5 also has a hot shoe that lets you mount an external flash or the optional 202,000-dot Live View Finder (DMW-LVF1). The LVF tilts vertically up to 90°, making it ideal for low-angle shots.



HD Movies – A Fantastic New Form of Expression



Shoot movies with all the beauty and excitement of HD

The LX5 lets you take both high-quality photos and HD movies. You can shoot breathtaking HD (1280 x 720) movies in AVCHD Lite (MPEG-4/H.264) backed by the high sound quality of Dolby® Digital Creator. You can record for a longer time without running out of memory because AVCHD Lite stores less data than Motion JPEG while maintaining stunning image clarity and detail.

•Motion images can be recorded continuously for up to 29min 59 sec in European PAL areas. •Continuous recording exceeding 2GB is not possible when recording motion JPEG. Remaining time for continuous recording is displayed on the screen. •Use a card with SD Speed Class with "Class 4" or higher when recording motion pictures in [AVCHD Lite]. Also, use a card with SD Speed Class with "Class 6" or higher when recording motion pictures in [MOTION JPEG]. •SD Speed Class is the speed standard regarding continuous writing.



My Color mode gives you creative control over coloration

With both photos and HD movies, My Color mode makes it easy to capture creative images. Select any of eleven preset effects, including Silhouette, Expressive, Pure and others. The Custom setting lets you adjust the color, brightness and saturation to your liking, to further expand your creative palette.



Pure

Retro

Dynamic B&W

Creative Movie mode puts you in the director's seat

You can adjust the aperture and shutter speed any way you like when shooting HD movies. This mode gives you a wider range of expression to explore, and lets you shoot movies with full manual control.



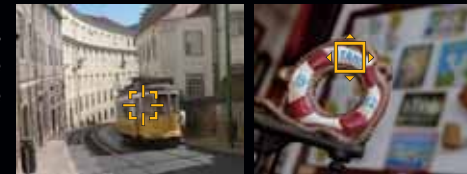
Versatile functions for more HD movie fun

- iA mode [Movie]:** Leave it to the camera to select the Movie Scene mode and backlight correction that will give you consistently beautiful movies.
- Zoom-in movie:** You can zoom in and out while shooting motion images.
- Wind cut function:** Minimizes the distracting sound you hear from the wind blowing into the mic.
- Video divide:** You can divide a single video into two parts, splitting it at any point you desire.
- Seamless playback:** Photos and movies are displayed together in the order that they were taken, to allow easy playback and viewing right on the camera.
- Cut animation:** You can cut out a number of frames during playback of a movie to produce still images.
- HDMI output:** Using an optional HDMI mini cable you can connect the LX5 to an HDTV, and view your images in stunning high-definition quality.

A Variety of Functions that Bring Out Your Creative Side

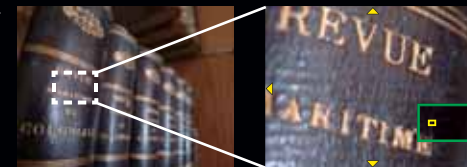
AF modes respond to fast-moving subjects and sudden situations

The AF function of the LX5 is not only accurate and easy to use, but also very fast. The Sonic Speed AF System has increased its speed by approximately 40% compared to previous models. You can choose from a wide range of AF modes, including multi-point AF with up to 23 focus points, 1-area AF in which the size and position of the focus point can be selected, Face Detection, and AF Tracking.



Use manual focus for precise focusing control

You can manually focus with the jog dial and cursor key. And you can also use the Manual Assist function, which shows you a blown-up view of that image instantly. This makes it easier to check that you've got a sharp focus.



iA mode, for beautiful photos – automatically



Just set the camera to iA mode, aim and shoot. The camera does all the rest. It automatically selects the best of six scene modes to match your subject, and corrects any blurring, focus or brightness problems.



Convenient functions for capturing unique, expressive images

- The 24mm/28mm/35mm/70mm/90mm step zoom gives you an angle of view similar to a single focus lens (Max. 852mm available with Intelligent Zoom and digital zoom combined)
- Make more expressive images with Film mode, by choosing from six colors and three monochrome shades
- Multi-Film mode records three different images using different Film modes at a single press of the shutter
- Versatile flash functions for 1st-curtain synchro, 2nd-curtain synchro, and consecutive shooting
- Multiple exposure lets you take up to three exposures in a single frame
- Two-axis white balance adjustment setting (Blue - Amber, and Magenta - Green)
- ISO value can be set in 1/3 EV increments for finer control and maximum ISO setting of 12800* allows you to shoot in extremely dark places
- RAW file compatible (Editable with the included "SILKYPIX® Developer Studio 3.1SE" software)

*When recording at 3M

Accessories that Expand the Fun and Power of the LX5



With the wide conversion lens.

- External Flash** DMW-FL220/DMW-FL360/DMW-FL500
- Wide Conversion Lens** DMW-LWA52*
- PL Filter** DMW-LPL52*
- External Optical Viewfinder** DMW-VF1
- ND Filter** DMW-LND52*
- Live View Finder** DMW-LVF1
- MC Protector** DMW-LMC52*
- Leather Case** DMW-CLX5
- Battery Pack** DMW-BCJ13
- Lens Adapter** DMW-LA6
- AC Adapter** DMW-AC5**

*Requires DMW-LA6 Lens Adapter. **Use of the DC coupler [DMW-DCCF6] is required.