

**FISKER COACHBUILD**



**DESIGN EXCELLENCE**



COACHBUILD REDEFINED



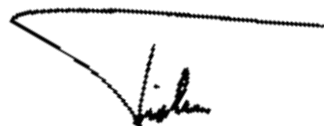
## FISKER COACHBUILD

Welcome to FISKER COACHBUILD, founded by Henrik Fisker and Bernhard Koehler. For many years, the two of us had the rare opportunity to take part in creating truly legendary automobiles: timeless sports cars that inspire awe and admiration. We both worked for renowned car companies like BMW, Ford and Aston Martin. And, like many entrepreneurs before us, there came a point when we looked at each other and realized that together, we could take it one step further. We wanted to follow our gut feelings – to put all our experience, energy and passion towards delivering cars that speak straight from the heart.

To bring a car to market that true automotive enthusiasts can drive and enjoy, we have created a car company where the production process is built around the design – to allow emotion and performance to blend more harmoniously than ever before.

In FISKER COACHBUILD, we have created something truly special. Not simply a new car company, but a new vision for what an exotic, high-performance, coachbuilt car can be. We have combined extraordinarily beautiful design with existing world-class engineering to deliver a final product without compromise. Our sports cars are created with a singular design language: instantly recognizable as a FISKER creation, inside and out. They are of the highest quality: using only the best materials. They are exclusive: each model will be built in strictly limited numbers. And they are thrilling: already beginning life as a premier sports car, then raised to new heights at FISKER.

This is a labor of passion, and we think you will agree that it shows in our cars.



Henrik Fisker  
Chief Executive Officer



Bernhard Koehler  
Chief Operating Officer

## DESIGN EXCELLENCE



The signature FISKER COACHBUILD grille takes its place in the pantheon of enduring automotive designs. Its inspiration: a jet aircraft skimming the surface – bold and powerful, with limitless possibilities.

### DESIGN BY COMMITTEE? THERE IS NO COMMITTEE.

There is only Henrik Fisker, the designer. And it shows in every curve. Every line. Every elegant proportion. Every element of the car is a singular work of art. Timeless. Muscular. Dynamic and extremely high quality. The adjectives can pour forth but they pale beside the reality of FISKER COACHBUILD.

To bring these designs to life, a new development process has been created by operations chief Bernhard Koehler. By moving efficiently from sketches to three-dimensional styling and clay modeling, we are able to bring details into focus early on in the design process. State-of-the-art digitizing and scanning technology helps ensure proper design proportions. Final-stage design involves crafting a full-sized feasibility model before we proceed to tooling production.





## HISTORY IN THE MAKING

A SPORTS CAR FROM FISKER COACHBUILD IS ENTIRELY NEW – AND SO IS THE WAY IT IS CREATED.

Our streamlined production process allows us to deliver an expertly finished, hand-crafted vehicle in a fraction of the time historically associated with coachbuild. Our super-luxury sports cars will also offer all of the technology, safety and reliability of their original platforms. It is an unprecedented combination.

Everywhere you look, the design speaks of exclusivity and performance. Interior and exterior surfaces reflect the FISKER DNA. The interior



graphics and finish are distinctive, and each body panel is crafted to our exact specifications. Everywhere you touch, the finest materials touch back. Milled aluminum accents by Andrea Cecutti of AC&A and your choice of buttery-soft leathers grace the interior; aluminum and carbon-fiber panels define the body. A deep, lustrous finish highlights every curve, in every color offered by the original manufacturer, plus several that are exclusive to FISKER. It's only fitting, because a FISKER is a step above what any manufacturer offers to enhance their own vehicles, and a move beyond what an aftermarket tuner alone can deliver.



The FISKER COACHBUILD logo embodies the talents and visions of its founders. Twin bars represent the designing pen of Henrik Fisker and the modeling tool of Bernhard Koehler. The vibrant colors of the sun touching the Pacific evoke the freedom of Southern California, where every FISKER car is born.

2006 FISKER LATIGO CS



FISKER LATIGO CS shown in Titanium Crystal Metallic.

## 2006 FISKER TRAMONTO

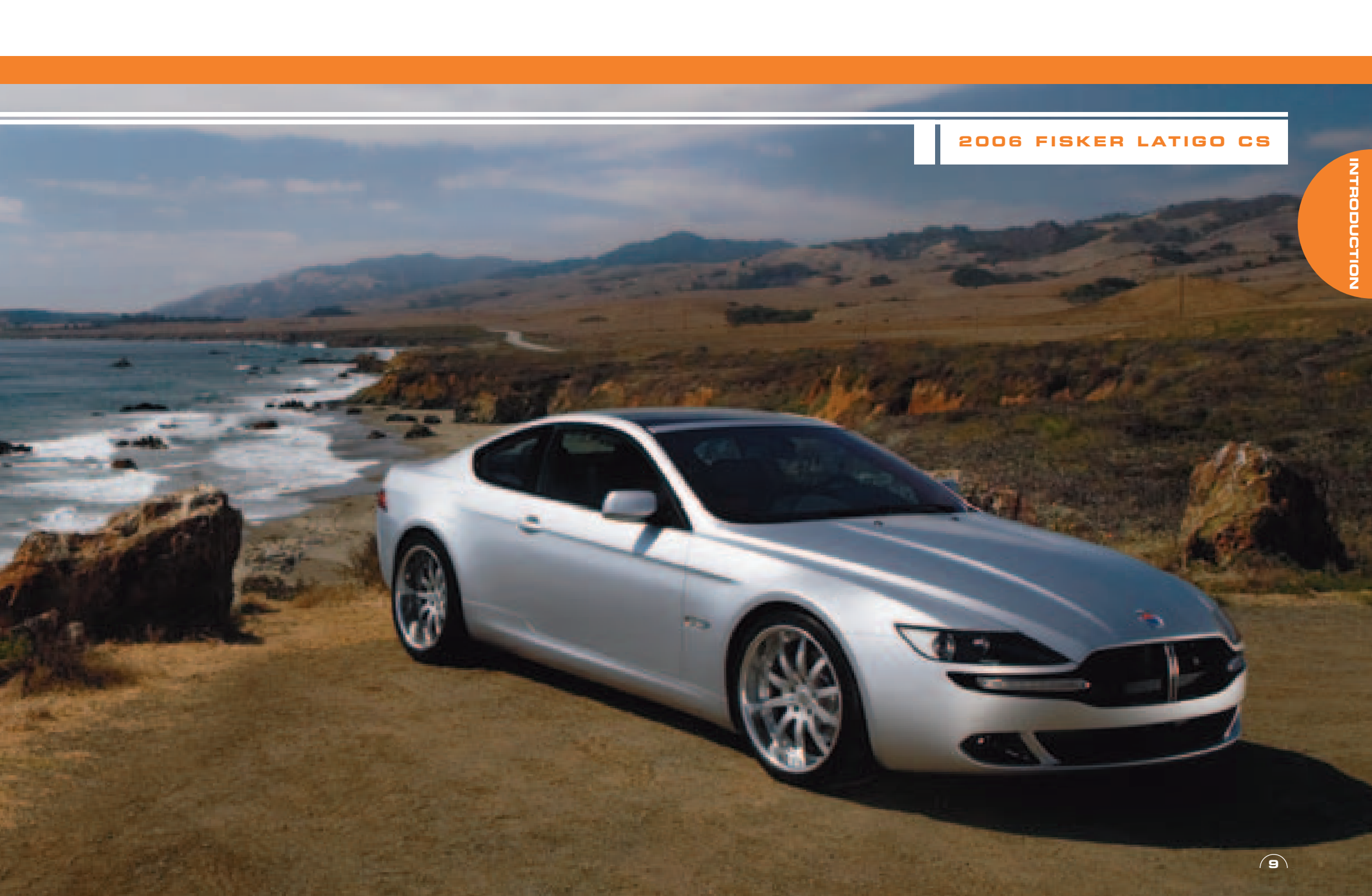
INTRODUCTION



FISKER TRAMONTO shown in Silver Quartz Metallic.

2006 FISHER TRAMONTO





**2006 FISKER LATIGO CS**

INTRODUCTION

Clean, continuous lines – such as the strong, defined side crease – combine with perfectly balanced proportions to create the signature FISKER look. Dynamic, sculptural and exotic.





## THE FISKER TRAMONTO

THE FISKER COACHBUILD 2006 TRAMONTO IS A SCULPTED STATEMENT OF EXOTIC OPEN-AIR MOTORING. Beneath the skin, the engineering excellence of what its base architecture once was – a Mercedes-Benz SL55 AMG – remains. The vast array of Mercedes-Benz' finest technological innovations, from the power-retractable hardtop to Active Body Control (ABC), remains untouched, as do safety systems, including crumple zones and airbags.\*

\* For complete information on the Mercedes-Benz SL55 AMG, visit [www.mercedes-benz.com](http://www.mercedes-benz.com)

At the same time, the TRAMONTO has become something much more, and the differences go beyond what meets the eye. How far beyond is up to you: engine, brake and exhaust-system upgrades are available – as are 0-60 times of 3.6 seconds and a top speed of 202 mph.

At the touch of a button on the console or the remote locking device, the power-retractable hardtop transforms the two-seat TRAMONTO from a coupe to roadster in just 16 seconds. And even with the hardtop retracted, the trunk is still spacious enough for two golf bags.

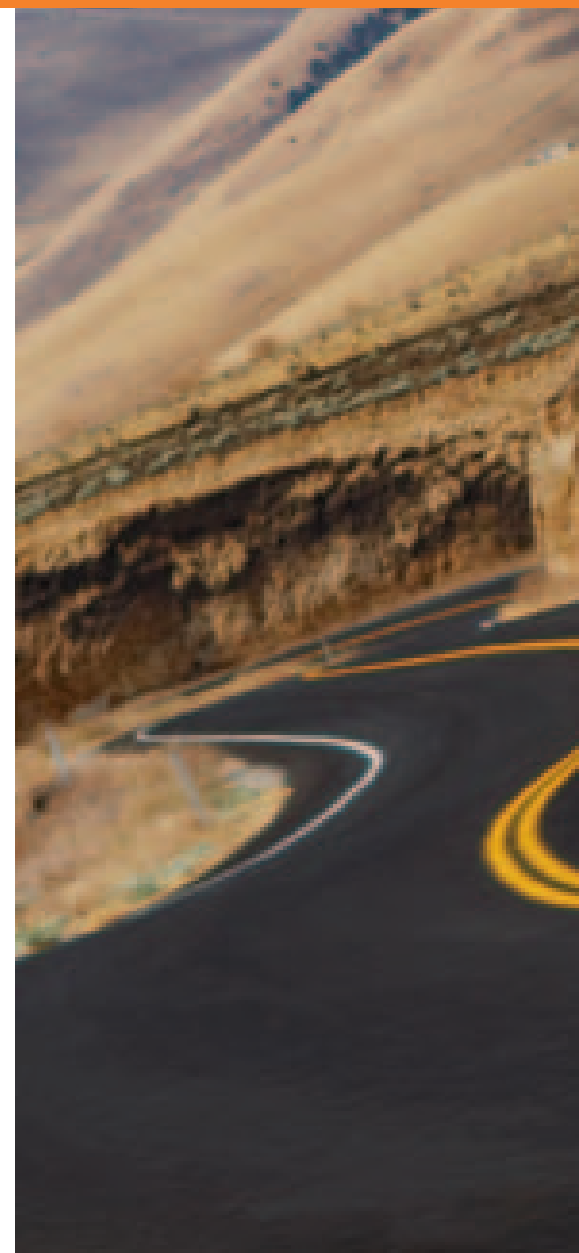


20" wheels and high-performance tires merge high performance and high style. The wheel lip is sculptured organically with the body.



## TRAMONTO DESIGN

The stance is wide. Low. Ground hugging. The lines flow smoothly from start to finish – unbroken in the signature FISKER style. The overall look conveys movement, speed and power, whether the power-retractable hardtop is secured for foul-weather driving or stowed for open-air motoring. Compared to its original platform, the TRAMONTO is reportioned with a slimmer, ultra-modern back end, a longer-looking hood line with a pronounced power dome, and no visual bumpers. It is poised, balanced, sculptured...and exotic. From any angle, the message is uncompromisingly beautiful. Unmistakably FISKER.

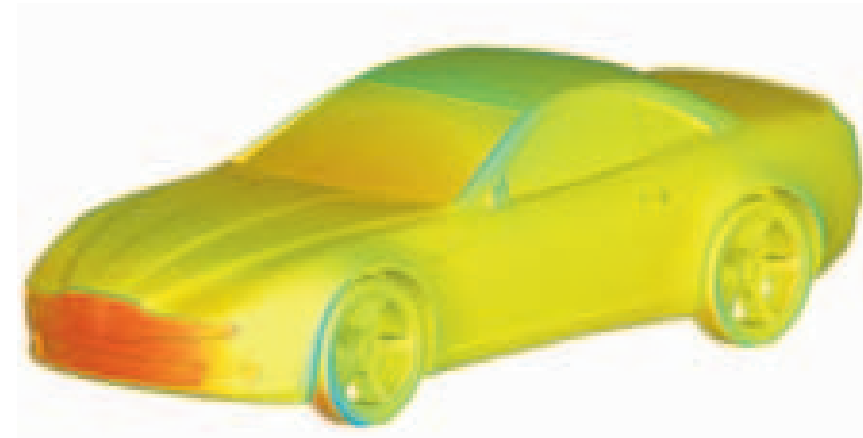






## TRAMONTO DETAILS

LOOK CLOSELY – BECAUSE THE CLOSER YOU GET, THE MORE PRECISE THE TRAMONTO BECOMES. Gaps between body panels are tight and uniform. Aluminum and carbon fiber – materials that befit an exotic sports car – make up the body panels. Steel is used judiciously, to enhance structural rigidity.



Tail lamps are purpose designed and integrated into the body. Exhaust pipes are structurally integrated into the design.

Drawing upon decades of expertise, FISKER COACHBUILD has sculpted aggressive aerodynamics directly into the form of the TRAMONTO, without bulky fins or spoilers. Modeling and testing by 3D Configuration experts at REALADI and their collaborative networking confirm resultant airflow.



LED turn indicators are housed in the grille, which is constructed of anodized aluminum mesh with a chrome surround. Fog lights are inset with carbon fiber bezels and integrated into the lower front spoiler.

## TRAMONTO POWER PLANTS

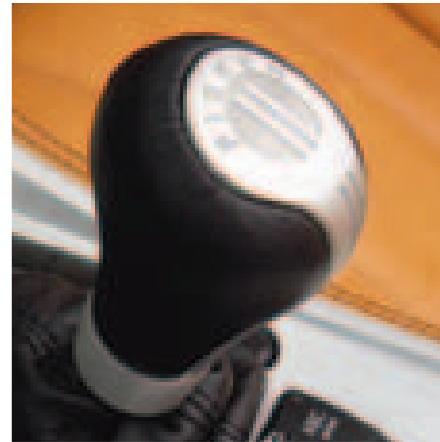
**STANDARD: MERCEDES-BENZ AMG-BUILT 493-HP, SUPERCHARGED V-8.** Competition-proven materials and technology grace this engine with a coveted combination of performance and reliability. Handcrafted by a dedicated AMG technician, it features forged aluminum pistons, a precision-balanced crankshaft and an ultra efficient liquid-to-air intercooler – delivering 493 hp, 516 lb-ft of torque and a 0-60 time of 4.5 seconds.

**PERFORMANCE PLUS PACKAGE: FISHER COACHBUILD HAS TEAMED WITH KLEEMANN, THE WORLD'S LEADER IN KOMPRESSOR (SUPERCHARGER) TECHNOLOGY FOR MERCEDES-BENZ, TO CREATE THE FISHER/KLEEMANN 610-HP SUPERCHARGED V-8.** The performance starts with a custom-made ECU program, redesigned pulley wheel and Super Sport Camshafts, to maximize engine output. Enlarged stainless steel tubular exhaust headers, down pipes and 70 mm dual exhaust system allow for freer breathing...a system which is further enhanced with KLEEMANN 120 cell metal catalysts for maximum performance gain.



For over ten years, KLEEMANN has been providing the best, most highly efficient tuning solutions – innovations that electrify the enthusiast while providing rewarding everyday driving.

All of these modifications result in rewards that range from the concrete to the visceral. The supercharged engine produces over 650 lb-ft of torque and 610 hp, delivering a 0-60 time of 3.6 seconds and smooth power throughout the entire operating range. And while it cannot be quantified, the music of the FISKER/KLEEMANN engine produces some strong feelings of its own.



Power delivery is controlled through a 5-speed AMG SpeedShift transmission, with FISKER-modified aluminum paddle-shift controls for manual-style shifting. The adaptive, automatic transmission monitors driving style and adjusts shift patterns accordingly.





## TRAMONTO PERFORMANCE

To thoroughly enjoy the power and performance of the TRAMONTO, a class-leading suspension and braking system are absolutely essential. The independent suspension is 4-link in the front, 5-arm multilink in the rear, and is optimized with an AMG-enhanced version of Active Body Control (ABC) that continually adjusts each wheel in response to road conditions and driving style.

Electronic Stability Control (ESP) imparts even greater levels of handling confidence. Rack-and-pinion steering features vehicle-speed sensitive power assist with integrated hydraulic damper. Stopping power is provided by standard AMG-enhanced 4-circuit electrohydraulic brakes, or

by the KLEEMANN high-performance brake system as part of the FISKER Performance Plus Package. The KLEEMANN system represents a major advance in brake technology, setting new standards for response, fade resistance, stability and long-term endurance. Massive disc pads provide nearly 85% greater area compared to other high-performance pads, and an innovative design allows for very high and consistent friction coefficients during deceleration, regardless of weather.

The KLEEMANN high-performance brake system is fully compatible with Mercedes-Benz Sensotronic Brake Control, Anti-lock Braking System and Brake Assist.

KLEEMANN High-Performance Brake System: Fully floating, directional, ventilated front discs front and rear. 15"(380mm), 8-piston calipers, front; 13" (330mm), 4-piston calipers, rear.



## TRAMONTO INTERIOR

INTERIOR DESIGN IS AS CRUCIAL AS THE EXTERIOR – AFTER ALL, IT IS HERE THAT DRIVER AND CAR BECOME ONE. To bring the FISKER COACHBUILD design to life, we have teamed with Distinctive Industries, the American-based leather interior experts. All seat and fascia surfaces are expertly hand trimmed and hand stitched, in a selection of super-premium, soft yet durable Italian leathers. Milled aluminum highlights the center stack, where every TRAMONTO is individually numbered, 1 through 150. Aluminum details accent the switch gear and join with leather to form the FISKER logo bars on the gear shift knob. The multifunction steering wheel is a FISKER original, with built-in sound system controls. Thoughtful, functional touches include improved cell phone storage and analog timepiece.

FISKER TRAMONTO shown with Sand and Raised Sand leather interior.

The driving experience is rounded out with such technical niceties as the standard COMAND system with DVD navigation and the digital Bose® Cabin Surround™ sound system. This audio tour de force features multichannel architecture, utilizing eight speakers and 5.1-channel Bose Centerpoint™ signal processing to generate a 360° field of sound. Bose AudioPilot™ also digitally compensates for unwanted ambient noise to maintain clarity with no perceptible change in volume.

You may choose from the long list of SL55 AMG options, such as the Hands-Free Communication System, Keyless Go, Distronic adaptive cruise control, Parktronic sensors front and rear, a Panorama roof for an expansive view of the sky even when the top is up, and SIRIUS Satellite Radio. Any and all options are available when you select your original vehicle – and all will be there for you when the FISKER TRAMONTO coachbuild is complete.



TRAMONTO



Aluminum accents are created by AC&A, high-quality suppliers to the automotive and aerospace industries. Owner Andrea Cecutti has over 20 years of experience, and started AC&A to bring his unique brand of machining and milling to customers on a one-to-one basis.

TRAMONTO SPECIFICATIONS

BASE ARCHITECTURE: MERCEDES-BENZ SL55 AMG

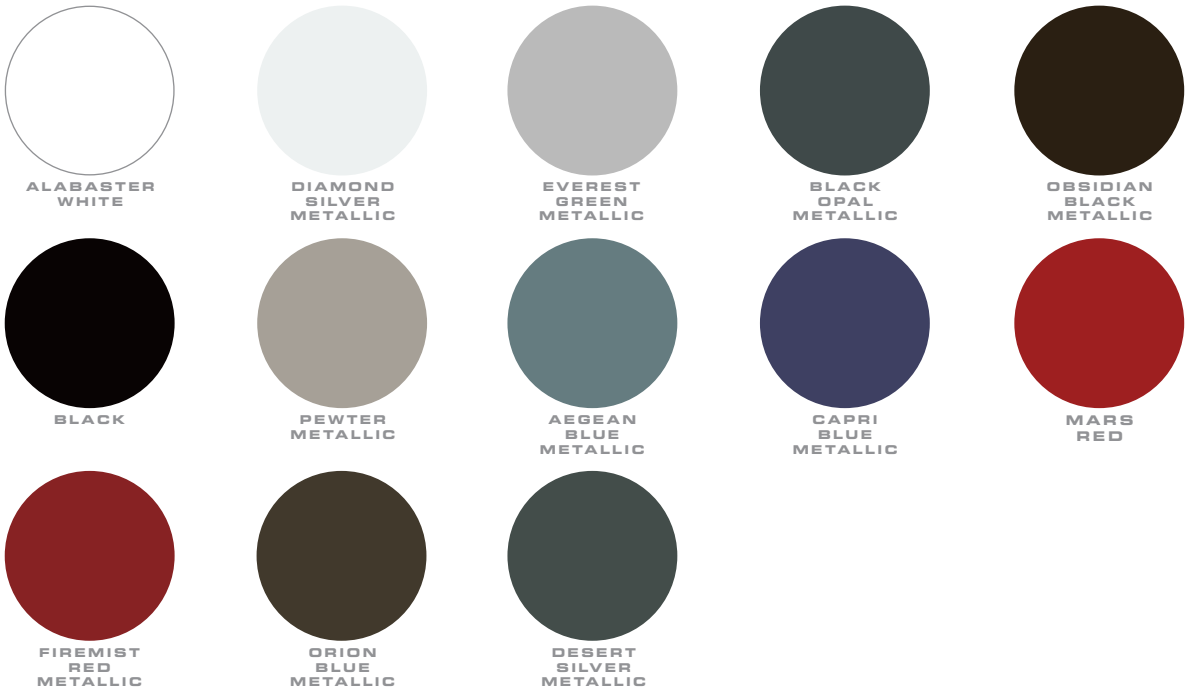
STANDARD
178.1"/73.6"/52.9"
100.8"
4205 lbs
5.5-liter AMG-built intercooled supercharged SOHC 24-valve 90° V-8
High-pressure die-cast alloy cylinder block. Reinforced crankshaft and valvetrain. Alloy heads. Lightweight camshafts. Reinforced engine block, oil pan structure, pistons, connecting rods and crankshaft.
493 hp @ 6100 rpm
516 lb-ft @ 2750-4000 rpm
Unleaded premium
21.1 gallon/80.0 liters (with 2.6-gallon/ 10.0-liter reserve)
Enhanced 5-speed automatic fingertip manual-style shift buttons
Rear-wheel drive
AMG-enhanced 4-circuit electrohydraulic
14.2" perforated and internally ventilated/AMG 8-piston fixed
13.0" perforated and internally ventilated/AMG 4-piston fixed
Independent 4-link
Independent 5-arm multilink
4.5 seconds
155 mph (electronically limited)
Alloy
Front: 255/30-20 Rear: 325/25-20
Collapsible compact limited-use tire on lightweight wheel

BASE ARCHITECTURE: MERCEDES-BENZ SL55 AMG

PERFORMANCE PLUS PACKAGE
178.1"/73.6"/52.9"
100.8"
4205 lbs
FISKER/KLEEMANN-enhanced 5.5-liter AMG-built intercooled supercharged SOHC 24-valve 90° V-8
Adds redesigned pulley wheel, Super Sport camshafts, enlarged stainless steel tubular exhaust headers, down pipes and 70 mm dual exhaust system. KLEEMANN 120 cell metal catalysts.
610 hp @ 5800 rpm
650 lb-ft @ 2200-4700 rpm
Unleaded premium
21.1 gallon/80.0 liters (with 2.6-gallon/ 10.0-liter reserve)
Enhanced 5-speed automatic paddle-shift with FISKER-modified aluminum controls for manual style
Rear-wheel drive
KLEEMANN High Performance Brakes
Vented and cross-drilled 2-piece discs: 15" (380 x 34 mm), 8-piston forged calipers
Vented and cross-drilled 2-piece discs: 13" (328 x 28 mm), 4-piston forged calipers
Independent 4-link
Independent 5-arm multilink
3.6 seconds
202 mph (electronically limited)
Alloy
Front: 255/30-20 Rear: 325/25-20
Collapsible compact limited-use tire on lightweight wheel

TRAMONTO AVAILABLE COLORS

ORIGINAL PAINT



FISKER PAINT



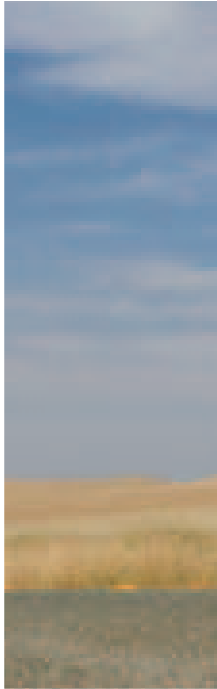
LEATHER CHOICES



TRAMONTO

**Color:** Regardless of your final color choice, we recommend that your original car be ordered with black interior and the original color that matches your final exterior color choice. Or, if you are choosing a FISKER exclusive color as your final choice, order your original car with a black exterior, as this will create the most pleasing final product.

The strong, sculptural feel of the LATIGO CS bears a strong family resemblance to the TRAMONTA. And while its distinctive grille and clean, unbroken lines are unmistakable, it speaks with an elegance and power all its own.





## THE FISKER LATIGO CS

**EXOTIC. UNCOMPROMISING. SPORTING, ELEGANT AND COMPELLING.** The BMW 6 Series Coupe provides the base vehicle architecture for the FISKER LATIGO CS. The signature FISKER touch brings a new gravitas and balance to the luxury sports coupe – it is understated sporty elegance at its best. As in the TRAMONTO, all electronic, telematic and safety systems remain untouched, every vehicle option is yours to choose from, and only 150 will ever be made.

The FISKER LATIGO CS is currently nearing production status, so final technical details are still in flux. Engine specifications call for a standard 32-valve, 4.8-liter V-8 pumping out over 360 horsepower, and an optional 5.0-liter V-10 that generates over 500 horsepower if you choose a BMW M6 as your base architecture.\*

\* For complete information on the BMW 6 Series and BMW M6, visit [www.bmw.com](http://www.bmw.com)



A silver Fisker Latigo CS is shown from a front-three-quarter view, parked on a grassy cliff. The car's sleek, aerodynamic design is highlighted by the lighting. In the background, a sandy beach meets the ocean under a blue sky with scattered clouds. The car's front grille features a vertical double-line design, and the Fisker logo is visible on the hood.

## LATIGO CS DESIGN

THIS IS DESIGN THAT IS FELT AS WELL AS SEEN.

In the lines of the car, there is tension – like an arrow pulled back in the bow. The C-pillars have been designed to flow in a sculptured manner and sit solidly over the rear wheel. The front and rear dimensions have both been shortened, and a sculptured power dome highlights the hood. Overall, these brilliantly balanced proportions lend a solid, unmistakable presence to the FISKER LATIGO CS, while advanced aerodynamic sculpting creates a shape that is virtually invisible to the air.

Lightweight, high-strength aluminum and carbon fiber define the outer shape – while inside, the expert touch of FISKER COACHBUILD and Distinctive Industries has created a spacious, high-performance, high-luxury environment. Every technological feature remains intact, including the home-theater quality Logic7 audio system and the optional heads-up display.

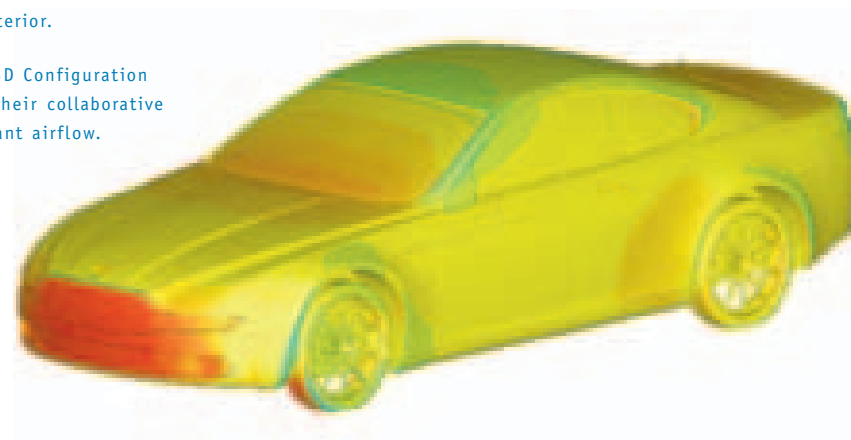






FISKER LATIGO CS shown with Saddle and Midnight Black leather interior.

Modeling and testing by 3D Configuration experts at REALADI and their collaborative networking confirm resultant airflow.



LATIGO CS SPECIFICATIONS

BASE ARCHITECTURE: BMW 650 Ci*			BASE ARCHITECTURE: BMW M6	
PERFORMANCE PLUS PACKAGE	STANDARD	DIMENSIONS	STANDARD	PERFORMANCE PLUS PACKAGE
188.7"/74.6"/53.9"	188.7"/74.6"/53.9"	Length/Width/Height	188.7"/74.6"/53.9"	188.7"/74.6"/53.9"
109.4"	109.4"	Wheel base	109.4"	109.4"
TBA	3740 lbs	Weight	3770 lbs	TBA
51.7/48.3	51.7/48.3	Weight distribution, front/rear	51.7/48.3	51.7/48.3
		ENGINE		
4.8-liter V-8	4.8-liter V-8	Engine type	5.0 liter-V-10	5.0-liter V-10
TBA	367 bhp	Nominal output/rpm	500 bhp @ 7750 rpm	TBA
TBA	330 lb-ft	Maximum torque	384 lb-ft @ 6100 rpm	TBA
Unleaded premium	Unleaded premium	Fuel grade	Unleaded premium	Unleaded premium
		DRIVETRAIN		
6-speed manual; optional 6-speed STEPTRONIC three-mode automatic; optional 6-speed Sequential Manual Gearbox (SMG)	6-speed manual; optional 6-speed STEPTRONIC three-mode automatic; optional 6-speed Sequential Manual Gearbox (SMG)	Transmission	7-speed Sequential Manual Gearbox (SMG)	7-speed Sequential Manual Gearbox (SMG)
Rear-wheel drive	Rear-wheel drive	Configuration	Rear-wheel drive	Rear-wheel drive
		BRAKES		
TBA	4-wheel ventilated anti-lock disc brakes (ABS) with Dynamic Brake Control (DBC)	Brake system	TBA	TBA
		PERFORMANCE		
TBA	TBA	Acceleration 0-62 mph	4.6 seconds	TBA
TBA	TBA	Top speed	155 mph (electronically limited)	TBA
		WHEELS		
Alloy	Alloy	Material	Alloy	Alloy
Front: 255/35-20 Rear: 335/30-20	Front: 255/35-20 Rear: 335/30-20	Tire dimensions/type	Front: 255/35-20 Rear: 335/30-20	Front: 255/35-20 Rear: 335/30-20

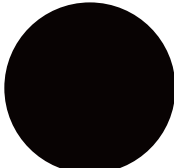
\*Note: BMW 650Ci expected by production time. The currently available BMW 645Ci with 4.4-liter engine is also a possible candidate for FISKER COACHBUILD conversion.

LATIGO CS AVAILABLE COLORS

ORIGINAL PAINT



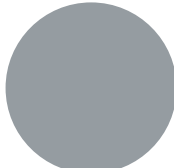
ALPINE  
WHITE



JET  
BLACK



BLACK  
SAPPHIRE  
METALLIC



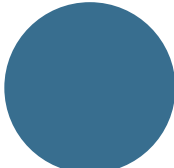
SILVER  
GRAY  
METALLIC



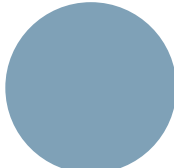
TITANIUM  
SILVER  
METALLIC



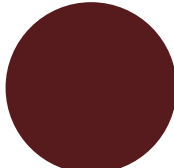
MINERAL  
SILVER  
METALLIC



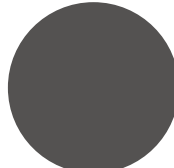
MYSTIC  
BLUE  
METALLIC



ATLANTIC  
BLUE  
METALLIC

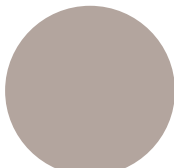


CHIARETTO  
RED  
METALLIC

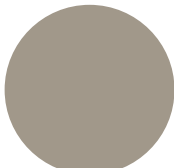


STRATUS  
GRAY  
METALLIC

FISKER PAINT



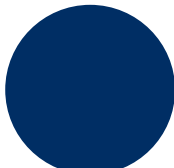
TITANIUM  
CRYSTAL  
METALLIC



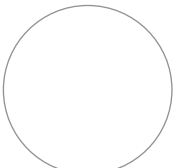
SILVER  
QUARTZ  
METALLIC



RAPTOR  
RED



OCEAN  
BLUE  
METALLIC



WHITE  
SANDS  
METALLIC

LEATHER CHOICES



WHITE  
STONE



BEACH  
WOOD



TAN



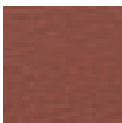
SAND



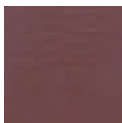
COTTO



RAISED  
SAND



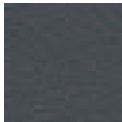
SADDLE



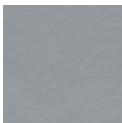
ALBA



CORAL  
REEF



MIDNIGHT  
BLACK



PEBBLE

**Color:** Regardless of your final color choice, we recommend that your original car be ordered with black interior and the original color that matches your final exterior color choice. Or, if you are choosing a FISKER exclusive color as your final choice, order your original car with a black exterior, as this will create the most pleasing final product.





## THE NEW DEFINITION OF EXCLUSIVITY

THERE HAS NEVER BEEN AN AUTOMOBILE QUITE LIKE THE FISKER TRAMONTO OR THE LATIGO CS, AND THERE WILL ONLY EVER BE 150 OF EACH IN ALL THE WORLD. And while owning a FISKER will be a singular privilege, so too will be the experience of acquiring one. Depending on your location in the world and your preference, you may:

- order your FISKER directly
- order your car through the original manufacturer's dealership, transfer the car to us and then pick it up back at the dealership upon completion
- order your car through the original manufacturer's dealership, transfer the car to us and then pick it up with us in California.

**Options:** You have the choice of specifying your original automobile with any of its available options, with the assurance that the transformation to a FISKER creation will only enhance your enjoyment.

**Color:** Regardless of your final color choice, we recommend that your original car be ordered with black interior and the original color that matches your final exterior color choice. Or, if you are choosing a FISKER exclusive color as your final choice, order your original car with a black exterior, as this will create the most pleasing final product.

However you choose to order your FISKER, you will enjoy a memorable and highly personal level of service. This low-stress experience continues as you own the car. Thanks to our partnerships with leading high-performance tuners, your service intervals and procedures will match those of the Mercedes-Benz or BMW automobile upon which your FISKER is based.

If you would like to order a FISKER TRAMONTO or a FISKER LATIGO CS, are interested in becoming a FISKER COACHBUILD dealer, or would like more information, please contact:

CRISTINA CHEEVER, VICE PRESIDENT  
MARKETING AND COMMUNICATIONS:

OFFICE: 949-252-5365

FAX: 949-252-5348

E-MAIL: [CCHEEVER@FISKERCB.COM](mailto:CCHEEVER@FISKERCB.COM)

## AT YOUR SERVICE



**HENRIK FISKER**  
Chief Executive Officer

DANISH-BORN HENRIK FISKER HAS DESIGNED AUTOMOBILES THAT ARE ALREADY LEGENDARY.

The BMW Z8. The Aston Martin DB9. And the soon-to-be produced Aston Martin V8 Vantage.

After graduating from The Art Center College of Design in 1989, Fisker began his career in Germany with BMW. Some of his most notable BMW exteriors include the Z07 concept (showcased in 1997) and the Z8 roadster (launched in 1999). In January 2001, Fisker became President and CEO of BMW's California-based industrial design subsidiary, Designworks/USA.

From there he moved to Ford Motor Company, holding such prominent positions as Creative Director for Ingeni, Ford's London-based design and creativity center; Board of Directors member and Design Director for Aston Martin; and Director of Ford's Global Advanced Design Studio (CAPC) in Irvine, California.

Henrik Fisker and partner Bernhard Koehler launched FISKER COACHBUILD in January 2005.



**BERNHARD KOEHLER**  
Chief Operating Officer

SINCE 1980, BERNHARD KOEHLER HAS SHAPED MORE THAN CARS – HE HAS SHAPED CAR DESIGNERS AND BUSINESS PRACTICES ALIKE.

His rare combination of creative and strategic talents resulted in 3D Development and Business degrees, which the German native first put to work for BMW. There, he met Henrik Fisker. The two have worked together in many capacities, for multiple companies, before opening the doors to FISKER COACHBUILD in January 2005.

During his 22 years with BMW, Koehler formed a model-creation training studio and spearheaded the MINI Monte-Carlo and BMW Motorcycle “Cruiser” sidecar concept projects. At BMW's industrial design subsidiary, Designworks/USA, he served as Director of 3D services and ultimately became the Director of Operations.

In 2002, he became Director of New Business Development at Ingeni, Ford Motor Company's design center in London, where he helped bring the Aston Martin DB9 and V8 Vantage to life. Koehler returned to California in January 2004 as Director of Business and Operations for Ford's Global Advanced Design Studio (CAPC).



**CRISTINA CHEEVER**  
Vice President,  
Marketing and Communications

CRISTINA CHEEVER JOINED FISKER COACHBUILD IN APRIL 2005 TO DEVELOP AND LAUNCH THE NEW COMPANY'S BRAND AND PRODUCTS. Her decade of luxury automotive expertise made her appointment a natural choice.

From April 2001 through early 2005, Cheever served Aston Martin North America as marketing communications manager, driving record-breaking sales in the US and Canada. Most recently, she led the launch of the DB9 Coupe and Volante via 1:1 experiential marketing events, public relations efforts and unique media strategies.

Previously, she worked for Jaguar North America, first in finance and then in Public Relations, where she held responsibility for such key launches as the XK8, S-TYPE and X-TYPE.

Originally from Brooklyn, New York, she holds degrees in International Business and Finance.

## CONTACT US

If you would like to order a FISKER TRAMONTO or a FISKER LATIGO CS, are interested in becoming a FISKER COACHBUILD dealer, or would like more information, please contact:

CRISTINA CHEEVER, VICE PRESIDENT  
MARKETING AND COMMUNICATIONS:

OFFICE: 949-252-5365

FAX: 949-252-5348

E-MAIL: [CCHEEVER@FISKERCB.COM](mailto:CCHEEVER@FISKERCB.COM)

**FISKER COACHBUILD**



**DESIGN EXCELLENCE**

Artwork and text in this brochure are based on the latest available product information at the time of printing.  
Product specifications are subject to change without prior notice. Some models may be shown with optional equipment.

©2005 FISKER COACHBUILD, LLC